

# *A short history*

TO COMMEMORATE THE  
FIRST FIFTY YEARS  
OF THE LIFE AND WORK  
OF THE

*Copthorne Lodge No 5427*

PROVINCE OF SURREY  
CONSECRATED ON THE 5TH OCTOBER 1933



Compiled at the request of the brethren of the Lodge  
by  
W. Bro. R.F. Fairweather, MBE, MC, PPJGW  
W. Bro. R.J. Shroll, PPJGW    W. Bro. A.C. Batcheler, PPS  
W. Bro. A.F. Houghton

Designed and produced by Bro. A.G. Newman

# *Contents*

Page 3	Introduction
Page 4	Founders of Copthorne Lodge, illustrations
Page 5	Consecration
Page 7	Landmarks in the Annals of Copthorne Lodge
Page 14	Charities Association
Page 15	Lodge of Instruction
Page 16	Officers of the Copthorne Lodge
Page 17	Masters of the Copthorne Lodge
Page 18	List of Members

# Introduction

*It would be difficult to improve on the introduction here reproduced and written by W. Bro. Arnold Avison on the occasion of the 21st Anniversary of the Lodge in 1954:*

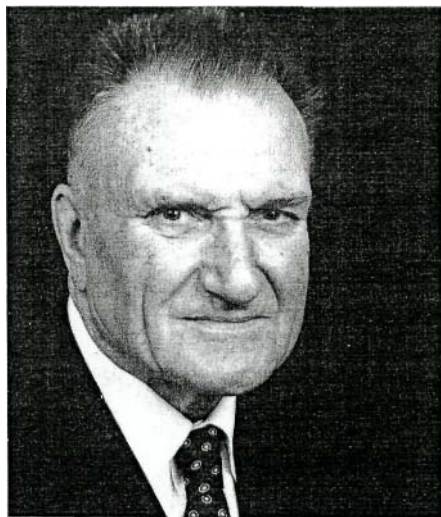
The history of England is said to be written in the Churches and Inns of our countryside. In one such inn, near by the church, 521 feet above sea level, at the very top of the hill and known to all as a very hospitable hostelry, there mused a kindly and philosophic figure, one Albert Swaine Gurney. He was a family man, with business interests, and an excellent mason. In his mind he conceived the idea of a local Lodge to accommodate those who had come to reside in that salubrious area known as Banstead and District. The Copthorne Lodge owes its inception primarily to Brother Gurney, who gathered together some seven good masons and true; these brethren decided to invite that eloquent divine, W. Bro. Rev. Canon F. Norman Skene, MA, Vicar of Banstead, to become their Master Primus. Canon Skene suggested the new Lodge be named "Copthorne", largely because the brethren would be drawn from the surrounding parishes forming the "Hundred of Copthorne", which included Banstead, Ewell, Kingswood and Tadworth. This title was adopted gladly and unanimously by the Founders, and the Skene family crest was, with his permission, adopted by the Lodge.



# Founders



W. Bro. H.H. Fox, PPAGDC



W. Bro. H.A. Loe, PJGD, PPSGW  
*Founders who celebrate 50 years membership*



W. Bro. Rev. Canon F.N. Skene,  
MA, PPGC, Primus Master

# Consecration

A great deal of preparatory work was undertaken by the Founders at their preliminary meetings and a Petition was submitted to the Right Worshipful Provincial Grand Master for Surrey and subsequently granted; the Lodge was consecrated and constituted on 5 October 1933, at Freemasons' Hall, Great Queen Street, London, by

W. Bro. G.H. REDWOOD, PGD, Deputy Provincial Grand Master

*assisted by*

W. Bro. J.B. CORRIE, PGD, Assistant Provincial Grand Master,

*and*

W. Bro. ARTHUR PURKESS, PAGDC, Prov. SOW as SW

W. Bro. SIR ROBERT C. EVANS, Prov. JGW as JW

W. Bro. REV. A.G. LE MASURIER, MA, Prov. GC as Chaplain

W. Bro. LT. COL. H.A. MANN, QBE, MC, AGSwB Prov. G. Sec.,  
as Secretary

W. Bro. G.R. SAUNDERS, PAGDC, PPGW, as DC

W. Bro. W.A. LATHAM, PAGP, Prov. AG Sec. as IG

The Assistant Provincial Grand Master, W. Bro. J.B. Corrie, PGD, then installed the Worshipful Master Designate, W. Bro. Rev. Canon F. Norman Skene, MA, PPGC.

The first Officers for the ensuing year were afterwards appointed from among the Founders and invested by the WM.

## FIRST OFFICERS AND FOUNDERS

W. Bro. REV. CANON F.N. SKENE, MA, PPGC	WM
W. Bro. C.S. POOLE	Acting IPM
Bro. H.H. FOX	SW
Bro. S.J.H. WILLIAMS	JW
Bro. REVP.R. LOBB, BA	Chaplain
W. Bro. A.H.Y. AVISON	Treasurer
W. Bro. C. PHIPPS, LGR	Secretary
W. Bro. T.F. TEW	DC
Bro. G.W. CRESSWELL	Almoner
Bro. R.R. SKIDMORE	SD
Bro. A.S. GURNEY	JD
Bro. W. BROWN	ADC

Bro. L.A. DEARLE	Organist
Bro. S.E. HARDY	Asst. Secretary
Bro. S. BAILEY	IG
Bro. R.B. PUTMAN	Steward
Bro. H.A. LOE	Steward
Bro. R. BOYD	Steward
Bro. A.G. HOLMES	Steward
Bro. T.O. WILLIAMS	Founders not
Bro. F.H. AYLING	taking office
Bro. C.J. BISHOP	Tyler

The Consecration of the Lodge is always a solemn and impressive ceremony, and thus it was with the Consecration of the Copthorne Lodge. An outstanding impression on that memorable day was made by the oration of the Chaplain, and it is pleasant to recall that the Right Worshipful Provincial Grand Master, Lt. Col. H.A. Mann, for the first time in the Province of Surrey, read the Warrant of Consecration in his earlier capacity as Provincial Grand Secretary.

The Worshipful Master announced from the Chair that it was the pleasure of the Lodge to invite HRH the Prince of Wales, Provincial Grand Master for Surrey, to accept Honorary Membership of the Lodge; this invitation was subsequently accepted most graciously by His Royal Highness, on 19 October, 1933.

The Brethren, by unanimous resolution, asked the Consecrating Officers to accept Honorary Memberships of the Lodge, which they did with pleasure.

There were present at the Consecration :-

8 Consecrating Officers  
20 Founders 81 Visitors  
2 Tylers  
111

MOTHER LODGE	BANSTEAD LODGE NO. 5032
LODGE SPONSORED IN 1947	YE OLDE WELLS
	LODGE NO. 6541
CHAPTER ASSOCIATED	ROYAL ARCH CHAPTER
IN 1951	COPTHORNE WELLS
	CHAPTER NO. 5427

# *Landmarks in the Annals of The Copthorne Lodge N<sup>o</sup> 5427*

Following consecration of the Lodge membership grew rapidly and reached fifty by December 1936. Meetings held in those early years frequently involved carrying out ceremonies in all three degrees and it was not unusual for them to last for up to four hours. During the first three years eighteen candidates were initiated and membership was also enhanced by a considerable number of joining members. From 1936 onwards the number of initiates tended to reduce and although double ceremonies were still conducted the number of occasions on which this was necessary diminished.

A unique event occurred on 3 April 1937 when the foundation stone of the new Banstead Vicarage which was the home of the first Master, Canon Skene, was laid. The Worshipful Master and members of the Lodge were invited to be present and dispensation was obtained from Grand Lodge for brethren attending to wear Masonic clothing. The laying of the stone, including proving it plumb, level and square, was carried out by officers of the Lodge and the stone declared well and truly laid.

In 1938 W. Bro. Canon F.N. Skene was appointed Assistant Grand Chaplain, the first Grand Lodge honour to be awarded to a member of the Lodge.

In September 1939 notice was received from the United Grand Lodge of England that having regard to the Emergency Orders of HM Government all Masonic meetings were suspended until further notice. Permission was later granted for meetings to be held under special conditions and in October 1941 the Lodge was informed that it was the desire of Grand Lodge that brethren should not wear white gloves for the duration of the war.

In October 1943 the Lodge was informed by the management of the Drift Bridge Hotel that owing to shortage of staff and food restrictions it was not possible to cater for future meetings so dispensation was obtained to hold them at the Stoneleigh Hotel until further notice.

On 4 March 1944 the Worshipful Master reported that he had Lodged the Warrant of the Lodge with his bank in Banstead for security but in an air raid the bank had received a direct hit and so far the Warrant had not been recovered. A dispensation was obtained to authorise the holding of the meeting without the Warrant.

In May 1947 a petition was received proposed by the Worshipful Master, W. Bro. A.E. Russell, and seconded by Bro. W.H.R. Webb for the founding of a new Lodge in the Province of Surrey. The recommendation was approved and signed in open Lodge by the Worshipful Master and Wardens and the New Lodge, Ye Olde Wells No. 6541, was consecrated by the R.W. Provincial Grand Master on 30 October 1947. A box working tools was presented to the new Lodge by the members of Copthorne Lodge at a meeting held on 6 March 1948.

A plate in the entrance at the Masonic Hall in Grove Road dated January 1948 records that W. Bro. E.F. Warner Batts was a founding Governor of the newly formed Sutton and District Masonic Lodges association. Copthorne Lodge played its full part in setting up the association, refurbishing the Hall and bringing it back into Masonic use. October 1948 a recommendation came before the Lodge that all future meetings should be held there and a dispensation authorising the change venue was obtained in time for the meeting on 27 November 1948 to held at the new location. The Lodge's interest has never waned and Copthorne is unique in having had at least one member on the Board of Governors continuously since 1948 and during the last seven years it has un played its part in the ambitious scheme for refurbishing and sanding its masonic home.

In March 1950 a resolution proposed by W. Bro. Canon Skene and seconded by W. Bro. H.C. Gregory that the Lodge should consent to a Chapter petition was approved. Copthorne Wells Chapter No. 5427 was subsequently consecrated on 10 February 1951 and has flourished ever since with enthusiastic support from the members of Copthorne Lodge.

In 1952 W. Bro. A.H.Y. Avison, PPGW was appointed Past Assistant Grand Director of Ceremonies, the second Grand Lodge honour to be awarded to a member of the Lodge.





The laying of the foundation stone, Banstead Vicarage, 3 April 1937

In October 1954 an Emergency Meeting was held to commemorate the 21st Anniversary of the Consecration of the Lodge at which the Worshipful Master invited Founders of the Lodge to occupy offices. V. W. Bro. Canon F.N. Skene, the Master Primus, occupied the Chair and the menu for the banquet which followed was:-

*Turtle Soup*



*Boars Head and Salad*

*(Piped in by Bro. J.A. Riach, Pipe Major)*



*Roast Turkey, Bacon, Sage and Onion Stuffing*

*Roast and Creamed Potatoes*

*Runner Beans*



*Fruit Salad and Ice Cream*

*Cheese and Biscuits*

*Coffee*

In May 1955 it was agreed that the custom of wearing Dinner Jackets at Installation Meetings should be discontinued.

In September 1956 the Lodge paid tribute to V. W. Bro. Canon Frederick Norman Skene, MA, PGC, PPGC, Primus Master of Copthorne Lodge who had died on 31 May 1956.

In September 1963 the attention of the Brethren was called to the memorandum of August 1963 from Provincial Grand Lodge in which it was intimated that the chant following the sealing of the obligation which had been sung in Copthorne Lodge from its consecration was contrary to the policy of Grand Lodge and the use of a chant which had such close association with a sacred service of the Anglican Church must cease.

In March 1965 the rules for setting up the Copthorne Lodge Charities Association were approved and in May 1965 the alternative form of words in the obligation as approved by Grand Lodge on 9 December 1964 together with the relevant alterations in the ritual were adopted. In March 1966 it was agreed that the Lodge should become a member of the newly formed Association of West End Lodges.

In 1966 the Lodge was gratified to hear that W. Bro. H.A. Loe, PPSGW, was to be appointed Past Assistant Grand Director of Ceremonies, the third Grand Lodge honour in its history. In 1976 his continued services to Masonry were recognised by promotion to Past Junior Grand Deacon.

In November 1966 the Lodge received the Commemorative Jewel as recognition of its full support for the 250th Anniversary Fund set up to provide a research fund for the Royal College of Surgeons. The Jewel is worn on the Master's Collar which was further adorned in May 1968 when the Lodge received a gift from Bro. A.C. Batcheler of a chain to the collar inscribed with the names of the Masters of the Lodge since its Consecration. This is but one of the many presentations which have been made to the Lodge by its members which are too numerous to detail but which have done so much to enhance the atmosphere of its meetings and the presentation of its ceremonies.

In September 1968 a Comforts Fund was inaugurated with a view to administering to the comfort of indisposed brethren and their

immediate families, particularly at Christmas time. The intention was that this should be outside the scope of the charities. At the inception the fund was administed by W. Bro. E.F. Warner Batts and later taken over by W. Bro. N.E. Morris.

In accordance with the recommendation of Grand Lodge and Provincial Grand Lodge the first appointment of a Charity Steward was made, W. Bro. N.E. Morris who was also Treasurer of the Copthorne Lodge Charities Association was invested in the office at the Installation meeting in September 1976.

In early 1982 it was agreed to form a panel of visiting brethren to help in maintaining contact with members incapacitated or otherwise unable to attend Lodge, and their families. The panel was set up at the meeting in March 1982.

In 1983 the By-Laws which had stood the Lodge in good stead for its first half century were revised and re-written.

It is an interesting comment on our times to record changes in the subscription and initiation fees over the years. When the Lodge was formed it was considered that the initiation fee should be increased to 15 guineas (£15.75) when the membership reached fifty, but this was never done. At a meeting on 5 October 1940 a resolution was approved that "For the duration of the War the Annual Subscription be reduced to one and a half guineas (£1.57½) and that the customary banquet be suspended". In practice the members continued to dine but paid by way of a dining fee in addition to the subscription.

The annual subscription has been:		The initiation fee has changed less often:	
1933 to 1939	£ 4.20	1933 to 1960	£10.50
1940 to 1945	1.57½	1961 to 1972	21.00
1946	4.20	1973 to 1976	30.00
1947 to 1960	5.25	1977	40.00
1961 to 1964	6.30	1978 to 1980	50.00
1965 to 1970	7.35	1981 to 1982	60.00
1971 to 1972	9.00	1983	65.00
1973 to 1975	15.00		
1976	20.00		
1977	22.00		
1978	26.00	Thus	
1979 to 1980	32.00	the initiation fee has decreased	
1981 to 1982	36.00	proportionately from 2½ times the	
1983	40.00	annual subscription to just over 1½	

## TREASURERS OF THE LODGE

1933-1945	A.H.Y. AVISON
1945-1954	H.A. LOE A.E.
1954-1963	RUSSELL C.A.
1963-1972	NOWELL A.C.
1972-EtSeq	BATCHELER

## SECRETARIES OF THE LODGE

1933-1935	C. PHIPPS
1935-1946	REV. CANON F.N. SKENE
1946-1948	R. BOYD
1948-1963	E. WARNER BATTS
1963-1970	W.E. MEADE
1970-1979	R.F. FAIRWEATHER
1979-EtSeq	A.F. HOUGHTON

## DIRECTORS OF CEREMONIES

1933-1943	T.F. TEW A.S.	1954-1968	H.W. GRANT
1943-1945	GURNEY A.G.	1968-1979	RJ. SHROLL H.A.J.
1945-1954	HOLMES	1979-1982	DAVEY R.F.
		1982-EtSeq	FAIRWEATHER

## HONOURS CONFERRED ON FOUNDERS AND MEMBERS OF THE LODGE

Year	Name	Rank	
1938	REV. CANON F.N. SKENE	AG Chap .....	Grand Lodge
1940	A.H.Y. AVISON	Prov. G Treasurer	
1941	T.F. TEW	Prov. Dep. GSwd. B	
1941	L.A. DEARLE	Prov. G Steward	
1942	C.S. POOLE	Prov. GO	
1943	A.S. GURNEY	PPAGDC	
1944	C.S. POOLE	LGR	
1944	H.H. FOX	Prov. AGSt. B	
1945	S.J.H. WILLIAMS	Prov. AGSt. B	
1946	H.K. TERRY	LGR	
1946	R.R. SKIDMORE	PPG St. B	
1947	W. BROWN	Prov. AGSt. B	
1947	H.A. LOE	Prov. G Treasurer	Grand Lodge
1947	REV. CANON F.N. SKENE	PGC .....	
1948	R. BOYD	Prov. JGD	
1948	S.E. HARDY	PPG St. B	Promotion
1949	A.H.Y. AVISON	PPGW .....	
1950	A.G. HOLMES	Prov. JGW	
1951	S. BAILEY	PPAGDC	Promotion
1952	L.A. DEARLE	PPAGDC .....	Grand Lodge
1952	A.H.Y. AVISON	PAGDC .....	
1952	D.J. STRACHAN	PPAGDC PPG	
1953	J.M. RICHARDS	St. B PPAGDC	
1954	A.E. RUSSELL	Prov. G Steward	
1954	E.F. WARNER BATTS	PPSGW .....	Promotion
1955	H.A. LOE	PPSGD .....	Promotion
1955	E.F. WARNER BATTS		

1956	H.C.GREGORY	PPAGDC	
1956	G.D.ANDREWS	Prov. AGSupt.Wks.	
1957	W.H.R.WEBB	Prov.GReg.	
1957	H.K.TERRY	PPGD	
1957	S.J.H. WILLIAMS	PPAGDC	
1958	W.C. LITTLEJOHN	Prov. AGSwd.B	
1959	H.W. GRANT	Prov. SGD	
1960	L.G.WILLIAMS	PPAGDC	
1960	H.H.FOX	PPAGDC .....	<b>Promotion</b>
1960	W.C. LITTLEJOHN	PPSGD .....	<b>Promotion</b>
1960	A.R.HALSEY	Prov. G St. B	
1961	C.A.NOWELL	Prov. AGDC	
1962	A.E.RUSSELL	PPGD	
1963	R.J.SHROLL	PPAGDC	
1964	E.J.F. PEPPER	PPAGDC	
1966	H.A.LOE	PAGDC .....	<b>Grand Lodge</b>
1966	S.J.H. WILLIAMS	PPGD .....	<b>Promotion</b>
1966	R.REED	Prov. AG Reg.	
1967	R.F.HEAD	PPAGDC	
1968	H.W. GRANT	PPSGW .....	<b>Promotion</b>
1968	D.E.TOWERSEY	PPAGDC (Bucks.)	
1969	C.A.NOWELL	PPSGD .....	<b>Promotion</b>
1969	S.G.PRYOR	PPJGD	
1970	W.E.MEADE	PPG Reg.	
1971	E.F.WARNER BAITS	PPSGW .....	<b>Promotion</b>
1971	W.C. LITTLEJOHN	PPJGW .....	<b>Promotion</b>
1971	G.M. CARTER	Prov. G Reg. Prov.	
1972	W.L.EVANS	AGDC	
1974	R.J.SHROLL	PPJGW .....	<b>Promotion</b>
1974	R.F. FAIRWEATHER	Prov.GSwd.B	
1975	J.H.MAWSON	PPAGDC	
1976	H.A.LOE	PJGD .....	<b>Grand Lodge</b>
1978	C.A.NOWELL	PPJGW .....	<b>Promotion</b>
1978	F.W.BARRETT	PPG St. B Prov.	
1978	A.C. BATCHELER	SOW PPG Supt.	
1979	H.A.J.DAVEY	Wks.	
1980	R.REED	PPJGD .....	<b>Promotion</b>
1980	E.G. CANNON	PP AGSupt.Wks.	
1980	H.A.LOE	PPJGW (Herts.)	
1981	A.F. MILLER	PPAGDC PPG	
1982	H.J. TINKLER	Supt. Wks.	
1983	R.F. FAIRWEATHER	PPJGW .....	<b>Promotion</b>
1983	N.E.MORRIS	Prov. Dep. GReg.	

# *Copthorne Lodge Charities Association*

**I**n the summer of 1964 Bro. Bob Fairweather, who was then Master-Elect, brought together a working party consisting of Bro. Jim Mawson, who was due to become Senior Warden, together with W. Bro. Eric Warner Batts and Bros. Tony Walker and Tony Batcheler all of whom had some knowledge of accounting and tax. The problem he presented to them was one which had concerned him for some time, how to maximise the charitable efforts of the members of the Lodge. It was known that the most effective form of giving was by deed of covenant but such deeds then had to run for seven years, and members were inclined to make only nominal donations in this way knowing they would be locked in for a period during which there would be different Masters Lists to support.

The answer was to set up the Copthorne Lodge Charities Association as a separate entity from the Lodge itself and registered in its own right as a charity. Covenants would be to the Association which would re-claim tax on them and then make gross donations year by year to the recognised Masonic Charities. In this way members could covenant the maximum amount possible knowing that the gross benefit would be going to the Masters List each year with no forward obligations. After approval by the Advisory Committee the Lodge agreed in May 1965 to set up the Association and it came into effect in September 1965. The first year's donation in September 1966 was one of £213.25 to the Provincial Grand Masters List for the RMBI 1971 Festival, made up by non-covenanted donations of £22, covenants of £112 and tax of £79; clearly the new body was off to a flying start. Sixteen years later the donation at September 1982 was £910 to the Provincial Grand Masters List for the RMIB 1983 Festival made up from non-covenanted donations of £108, covenants of £556 and tax of £246.

There have been two Treasurers during the seventeen years the Association has been in existence:-

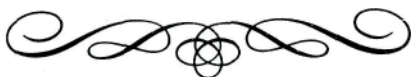
1965-1968 & 1973-1974                      A.C. BATCHELER

1968-1973&1974-EtSeq                      , N.E.MORRIS

It fell to W. Bro. Morris to negotiate the effects of the changes in the tax law in 1973 which caused so much trouble to charities in general.

Although most of the day-to-day running of the Association falls on the Treasurer, the Secretary is also called upon for certain duties particularly with the need for AGMs which are separate from the Lodge meetings. The office of Secretary has been held by:-

1965-1967	A.M. WALKER
1967-1975	A.F. HOUGHTON
1975-1976	A.F. MILLER J.
1976-1979	JONES J.G.BOTT
1979-1983	G.J.NEWMAN
1983-EtSeq	



## *Copthorne Lodge of Instruction*

The Copthorne Lodge of Instruction has met weekly between the months of September and May since 1934, and the opportunity thus afforded by such frequent association of the members has played no little part, not only in promotion and maintaining the happy companionship that exists in our Lodge, but of developing pride in the standard of work carried out in the Lodge.

The Preceptors have been:-

1934-1943	W. Bro. T.F. TEW
1943-1945	W. Bro. C.S. POOLE
1945-1949	W. Bro. R.R. SKIDMORE
1949-1954	W. Bro. H.C. GREGORY
1954-1967	W. Bro. H.W. GRANT
1967-1979	W. Bro. R.J. SHROLL
1979-1982	W. Bro. H.A.J. DAVEY
1982-Et Seq	W. Bro. R.F. FAIRWEATHER

## **OFFICERS 1983-84**

<b>WM</b>	W.Bro.M.W. Cole
<b>IPM</b>	W.Bro.P.W. Barham
<b>SW</b>	Bro. A.G. Newman
<b>JW</b>	Bro. A.J.C. Benstead
<b>Chaplain</b>	W. Bro. J.H. Mawson, PM, PPAGDC
<b>Treasurer</b>	W. Bro. A.C. Batcheler, PM, PPSGW
<b>Secretary</b>	W. Bro. A.F. Houghton, PM
<b>DC</b>	W. Bro. R.F. Fairweather, MBE, MC, PM, PPJGW
<b>SD</b>	Bro. J.G. Bott
<b>JD</b>	Bro. B.F. Salmon
<b>Charity Steward</b>	W. Bro. N.E. Morris, PM, Prov. Dept. G Reg.
<b>Almoner</b>	W. Bro. A.F. Miller, PM, PPAGDC
<b>Asst. DC</b>	W. Bro. R.G. Rickard, PM
<b>Asst. Sec.</b>	W. Bro. L.C. Thompson, PM
<b>IG</b>	Bro. A.F. Fairweather
<b>Steward</b>	W.Bro.A. Sheward, PM
<b>Steward</b>	Bro. L.W. Prince
<b>Steward</b>	Bro. G.J. Newman
<b>Steward</b>	Bro. T.E. Drane
<b>Steward</b>	Bro. A. Thompson
<b>Steward</b>	Bro. B.R. Mann
<b>Tyler</b>	Bro. W. Barclay
<b>Hon. Organist</b>	W.Bro.J. Varney

## **OFFICERS LODGE OF INSTRUCTION**

<b>Preceptor Deputy</b>	W. Bro. R.F. Fairweather, MBE, MC, PM, PPJGW
<b>Preceptor</b>	W. Bro. R.G. Rickard, PM Bro. L.W. Prince Bro.
<b>Treasurer</b>	A.F. Fairweather
<b>Secretary</b>	

## **COPTHORNE LODGE CHARITIES ASSOCIATION**

<b>Treasurer</b>	W. Bro. N.E. Morris, PM, Prov. Dept. G Reg.
<b>Secretary</b>	Bro. G.J. Newman

## **Surrey Masonic Halls Association — Representative**

W. Bro. L.C. Thompson, PM

## **Surrey Masonic Sports Association — Representative**

W. Bro. L.C. Thompson, PM



# *Masters of The Copthorne Lodge*

1933 Rev. Canon F.N. Skene MA	1958 W. Bro. R.F. Head
1934 W. Bro. H.H. Fox	1959 W. Bro. E.J. Wragg
1935 W. Bro. S. J.H. Williams	1960 W. Bro. S.G. Pryor
1936 W. Bro. R.R. Skidmore	1961 W. Bro. W.E. Meade OBE
1937 W. Bro. A.S. Gurney	1962 W. Bro. G.M. Carter
1938 W. Bro. W. Brown	1963 W. Bro. W.L. Evans
1939 W. Bro. S.E. Hardy	1964 W. Bro. R.F. Fairweather MBE.MC
1940 W. Bro. H.A. Loe	1965 W. Bro. J.H. Mawson
1941 W. Bro. R. Boyd	1966 W. Bro. A. M. Walker
1942 W. Bro. A.G. Holmes	1967 W. Bro. F.W. Barrett
1943 W. Bro. G.D. Andrews	1968 W. Bro. A.C. Batcheler
1944 W. Bro. D.J. Strachan	1969 W. Bro. H.A.J. Davey
1945 W. Bro. J.W. Richards	1970 W. Bro. E.G. Cannon
1946 W. Bro. A.E. Russell	1971 W. Bro. A.F. Miller
1947 W. Bro. E.F. Warner Batts	1972 W. Bro. H.J. Tinkler
1948 W. Bro. H.C. Gregory	1973 W. Bro. N.E. Morris
1949 W. Bro. W. H.R. Webb	1974 W. Bro. A.F. Houghton
1950 W. Bro. W.C. Littlejohn MBE.MM	1975 W. Bro. E.W. Sellwood
1951 W. Bro. H.W. Grant	1976 W. Bro. L.C. Thompson
1952 W. Bro. L.G. Williams	1977 W. Bro. Rickard
1953 W. Bro. C.A. Nowell	1978 W. Bro. A. Sheward
1954 W. Bro. R.J. Shroll	1979 W. Bro. R.D. Lake
1955 W. Bro. E.J.F. Pepper	1980 W. Bro. R.A. Taylor
1956 W. Bro. C.R. Mitchell	1981 W. Bro. J. Jones
1957 W. Bro. R. Reed	1982 W. Bro. P. Barham
	1983 W. Bro. M.W. Cole

**COPTHORNE LODGE**  
**No. 5427**  
**LIST OF MEMBERS 1983/84**

W. Bro. H.H. Fox, PPAGDC	Bro. S.F.A. Cummins
W. Bro. H.A. Loe, PJGD, PPSGW	Bro. S.R. Kemp
W. Bro. H.W. Grant, PPSGW	W. Bro. R.G. Rickard
W. Bro. W.L. Evans, PPAGDC	W. Bro. A. Sheward
W. Bro. L.G. Williams, PPAGDC	Bro. P.J. Kindred
Bro. K.W. Dewes	Bro. M.A. Thatcher
W. Bro. R.J. Shroll, PPJGW	Bro. D.S. King
W. Bro. C.A. Nowell, PPJGW	W.Bro. R.D. Lake
W. Bro. R. Reed, PPJGD	W.Bro. R.A. Taylor
Bro. L. Hook	W. Bro. J. Jones
Bro. J. Warton	Bro. D.J. Spacey
W. Bro. S.G. Pryor, PPJGD	W.Bro. P.W. Barham
W. Bro. G.M. Carter, PPG Reg	W. Bro. M.W. Cole
Bro. J.N. Walker	Bro. A.G. Newman
W. Bro. R.F. Fairweather, MBE.MC, PPJGW	Bro. P. Lake
Bro. R.C. White	Bro. J.H. Smith
Bro., A.C. Wilkinson	Bro. B.F. Salmon
W. Bro. J.H. Mawson, PPAGDC	Bro. J.G. Bott
W. Bro. A.F. Miller, PPAGDC	Bro. A.J.C. Benstead
W. Bro. A.C. Batcheler, PPSGW	Bro. G.J. Newman
W. Bro. H.A.J. Davey, pposuptwks	Bro. K. Garraway
W. Bro. H.J. Tinkler, pposuptwks	Bro. A.F. Fairweather
Bro. H.R. Newton	Bro. L.W. Prince
W. Bro. E.G. Cannon,	Bro. D.W. Davies
W. Bro. N.E. Morris,	Bro. T.E. Drane
W. Bro. A.F. Houghton	Bro. A. Thomson
W. Bro. L.C. Thompson	Bro. B.R. Mann
W. Bro. D.E. Towersey, PM 2492 PPAGDC (Bucks)	Bro. G.C. Brown
Bro. H.J. Yardy	Bro. A.D. Kierans
W. Bro. E.W. Sellwood	

## CLOSING NOTE

This epitome of the fifty years of the life of our Lodge has been written in order to record a few of the early experiences which fill some of the elder brethren with pardonable pride and pleasure, and in the earnest hope that it will inspire others to good and faithful work in the future.

It may also serve as a history to the younger members with whom the future lies, and who undoubtedly will carry on the traditions of the Copthorne Lodge in the true spirit of fraternal unity.

Mention has been made of some brethren who have given unstinted service to the Lodge and who deserve our fullest gratitude.

Prominence has perforce been given to the serious side of Masonry, but throughout a really happy spirit of companionship and the joy of brotherhood have always marked our meetings. This is as it should be; in brief, our Masonry in the Copthorne Lodge has made us better and happier men.

May the Lodge ever continue to thrive.

*"The scenes and events of the past, Tinged with the prismatic hue of memory, Have ever afforded, And will ever continue to afford, Delightful recollections of the most profound nature."*

*(Dickens)*

